

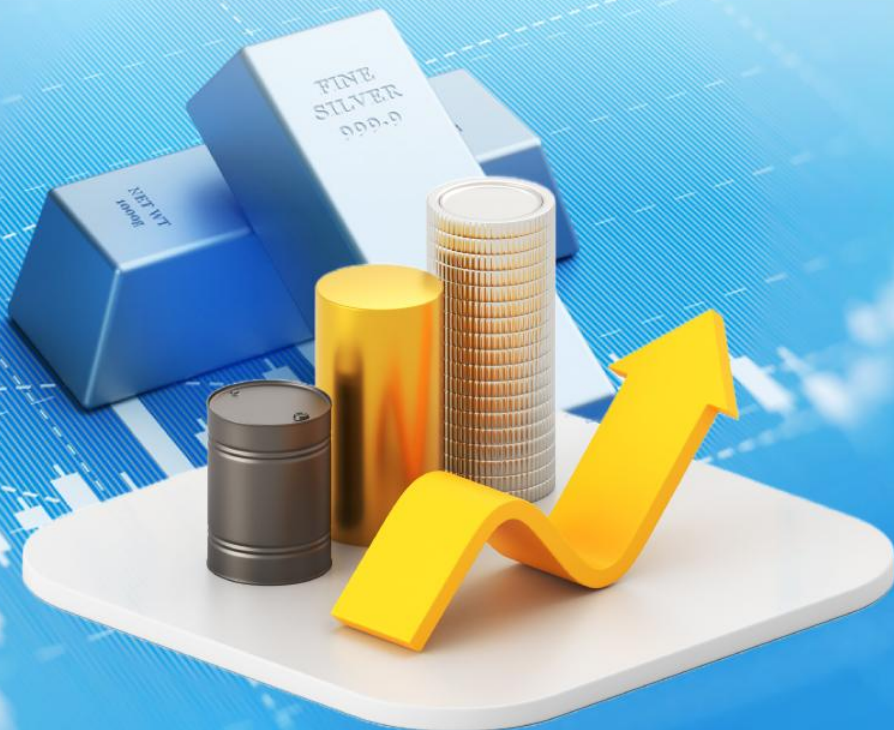
# Akshaya Tritiya 2026

Strategic Entry Into Gold ETFs For Investors

**Birla Sun Life Gold ETF**

**(BSLGOLDETF | 533408 | INF209KB18D3)**

**14-April-2026**



Research Analysts

Vinay Rajani, CMT ([vinay.rajani@hdfcsec.com](mailto:vinay.rajani@hdfcsec.com))

Saumil Gandhi ([saumil.gandhi@hdfcsec.com](mailto:saumil.gandhi@hdfcsec.com))



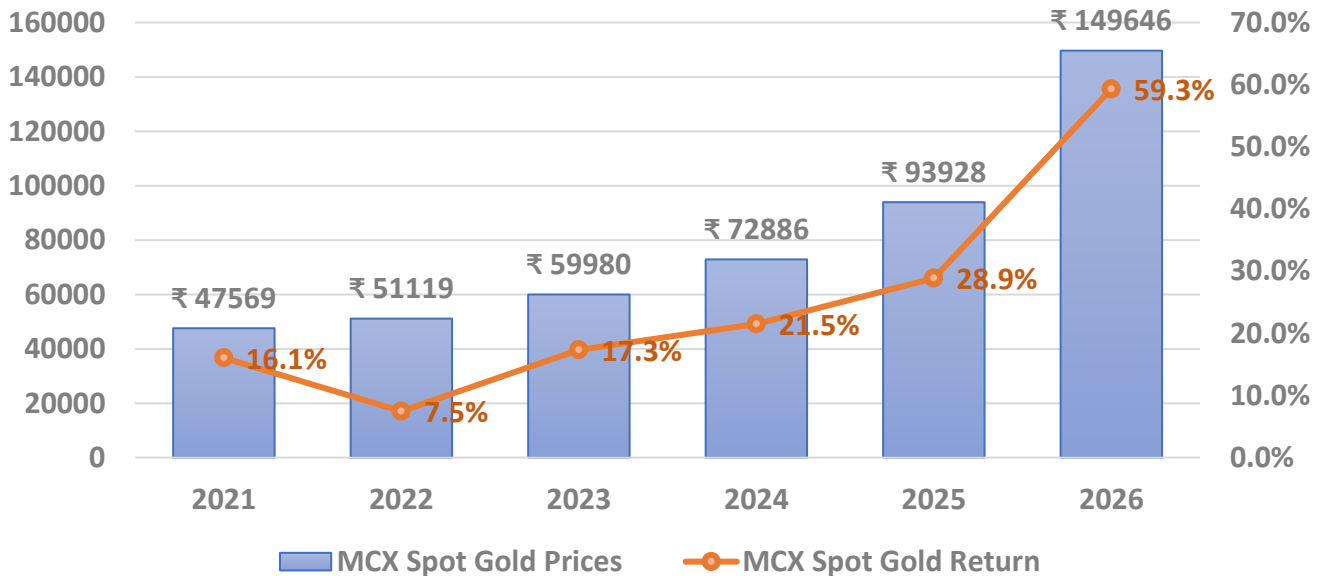
## Akshaya Tithiya and Gold: Tradition, Returns, and Portfolio Strength

Gold holds deep cultural significance during the Akshaya Tithiya in India, making it one of the most auspicious occasions for purchasing the precious metal. The term “Akshaya” translates to “never diminishing,” symbolizing eternal prosperity and wealth.

It is widely believed that buying gold on this day brings lasting fortune and success. As a result, families often initiate new ventures, investments, or savings plans during this period, considering it highly favourable.

Gold has delivered attractive returns in recent years, drawing increased investor interest in the precious metal. An analysis of gold’s performance over the past five years—from Akshaya Tithiya to Akshaya Tithiya—reveals that it has generated double-digit returns in four out of five years.

### Gold Prices Trend and Return (Akshaya Tithiya Period)



This trend indicates that investing in gold during Akshaya Tithiya has historically been favourable for investors, emphasizing both its cultural significance and its appeal as an investment asset. This consistent performance underscores gold’s ability to act as an effective portfolio diversifier, especially during periods of economic uncertainty and market volatility.



## Gold Correction: A Healthy Pause Within a Long-Term Uptrend

Gold prices corrected nearly 20% after hitting an all-time high in late January, indicating a phase of profit booking and consolidation. The correction was primarily driven by a shift in macroeconomic conditions following geopolitical tensions involving the US, Israel, and Iran.

The conflict led to a sharp rise in energy prices, which increased concerns around inflation. Higher inflation expectations have supported a more hawkish monetary policy outlook, strengthened the US dollar and pushed treasury yields higher.

This shift has reduced expectations of rate cuts and increased the likelihood of prolonged policy tightening, creating short-term headwinds for gold.

However, the broader outlook for gold remains constructive. Strong underlying fundamentals continue to support the long-term bullish narrative, particularly sustained central bank buying and a strategic shift by major economies toward increasing gold reserves amid ongoing de-dollarization trends.

Additionally, if geopolitical tensions persist and begin to weigh on global economic growth or increase recession risks, gold is likely to regain its safe-haven appeal. In such a scenario, renewed investment demand could support a recovery in prices.

From a technical perspective, the current correction appears healthy following the strong rally seen previously. The overall structure remains positive, suggesting that this phase may be a consolidation within a longer-term uptrend rather than a reversal.

Overall, we see the current correction as a constructive development and a potential buying opportunity, especially for investors who were waiting for a price pullback to enter the market.

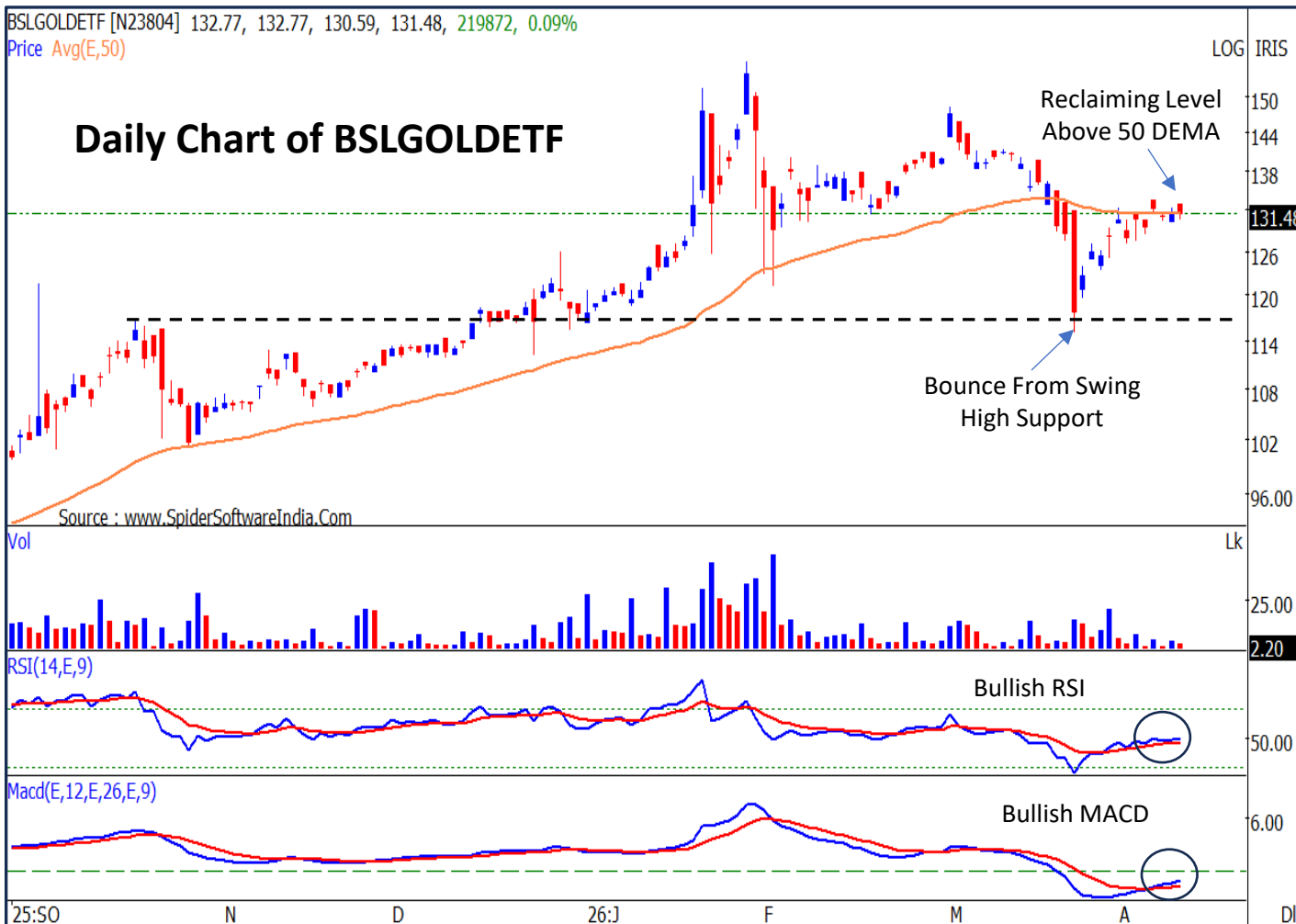
### Long-Term Tailwinds for Gold

- ✓ Sustained central bank buying
- ✓ Ongoing de-dollarization trend
- ✓ Geopolitical and economic uncertainties
- ✓ Potential global slowdown or recession risks
- ✓ Persistent inflation over the medium term
- ✓ Elevated US debt levels



# Birla Sun Life Gold ETF (BSLGOLDETF | 533408 | INF209KB18D3)

Buying Range	CMP	Avg Level	Target	Time-Frame
131.40-135	131.48	120	145, 155	6 Months



## Technical Rationales

- After sharp correction in March 2026, ETF found support on October 2025 swing high(116) and bounced back.
- Recent recovery has pushed the ETF prices above its 50 DEMA.
- ETF has been forming Higher Tops and higher bottoms on weekly and monthly chart.
- Daily RSI is holding above 50, indicating sustained uptrend.
- Daily MACD has crossed its signal line upwards, which indicates shift towards bullish momentum.



## Disclosure:

**We**, authors and the names subscribed to this report, hereby certify that all of the views expressed in this research report accurately reflect our views about the subject issuer(s) or securities. SEBI conducted the inspection and based on their observations have issued advise/warning. The said observations have been complied with. We also certify that no part of our compensation was, is, or will be directly or indirectly related to the specific recommendation(s) or view(s) in this report.

Research Analyst or his/her relative or HDFC Securities Ltd. does not have any financial interest in the subject company. Also Research Analyst or his relative or HDFC Securities Ltd. or its Associate may have beneficial ownership of 1% or more in the subject company at the end of the month immediately preceding the date of publication of the Research Report. Further Research Analyst or his relative or HDFC Securities Ltd. or its associate does have/does not have any material conflict of interest.

Any holding in stock – No

HDFC Securities Limited (HSL) is a SEBI Registered Research Analyst having registration no. INH000002475.

## Disclaimer:

This report has been prepared by HDFC Securities Ltd and is solely for information of the recipient only. The report must not be used as a singular basis of any investment decision. The views herein are of a general nature and do not consider the risk appetite or the particular circumstances of an individual investor; readers are requested to take professional advice before investing. **"This report may have been refined using AI tools to enhance clarity and readability."**

Nothing in this document should be construed as investment advice. Each recipient of this document should make such investigations as they deem necessary to arrive at an independent evaluation of an investment in securities of the companies referred to in this document (including merits and risks) and should consult their own advisors to determine merits and risks of such investment. The information and opinions contained herein have been compiled or arrived at, based upon information obtained in good faith from sources believed to be reliable. Such information has not been independently verified and no guaranty, representation of warranty, express or implied, is made as to its accuracy, completeness or correctness. All such information and opinions are subject to change without notice. Descriptions of any company or companies or their securities mentioned herein are not intended to be complete. HSL is not obliged to update this report for such changes. HSL has the right to make changes and modifications at any time.

This report is not directed to, or intended for display, downloading, printing, reproducing or for distribution to or use by, any person or entity who is a citizen or resident or located in any locality, state, country or other jurisdiction where such distribution, publication, reproduction, availability or use would be contrary to law or regulation or what would subject HSL or its affiliates to any registration or licensing requirement within such jurisdiction.

If this report is inadvertently sent or has reached any person in such country, especially, United States of America, the same should be ignored and brought to the attention of the sender. This document may not be reproduced, distributed or published in whole or in part, directly or indirectly, for any purposes or in any manner.

Foreign currencies denominated securities, wherever mentioned, are subject to exchange rate fluctuations, which could have an adverse effect on their value or price, or the income derived from them. In addition, investors in securities such as ADRs, the values of which are influenced by foreign currencies effectively assume currency risk. It should not be considered to be taken as an offer to sell or a solicitation to buy any security.

This document is not, and should not, be construed as an offer or solicitation of an offer, to buy or sell any securities or other financial instruments. This report should not be construed as an invitation or solicitation to do business with HSL. HSL may from time to time solicit from, or perform broking, or other services for, any company mentioned in this mail and/or its attachments.

HSL and its affiliated company(ies), their directors and employees may; (a) from time to time, have a long or short position in, and buy or sell the securities of the company(ies) mentioned herein or (b) be engaged in any other transaction involving such securities and earn brokerage or other compensation or act as a market maker in the financial instruments of the company(ies) discussed herein or act as an advisor or lender/borrower to such company(ies) or may have any other potential conflict of interests with respect to any recommendation and other related information and opinions.



HSL, its directors, analysts or employees do not take any responsibility, financial or otherwise, of the losses or the damages sustained due to the investments made or any action taken on basis of this report, including but not restricted to, fluctuation in the prices of shares and bonds, changes in the currency rates, diminution in the NAVs, reduction in the dividend or income, etc.

HSL and other group companies, its directors, associates, employees may have various positions in any of the stocks, securities and financial instruments dealt in the report, or may make sell or purchase or other deals in these securities from time to time or may deal in other securities of the companies / organizations described in this report. As regards the associates of HSL please refer the website.

HSL or its associates might have managed or co-managed public offering of securities for the subject company or might have been mandated by the subject company for any other assignment in the past twelve months.

Please note that HDFC Securities has a proprietary trading desk. This desk maintains an arm's length distance with the Research team and all its activities are segregated from Research activities. The proprietary desk operates independently, potentially leading to investment decisions that may deviate from research views.

HSL or its associates might have received any compensation from the companies mentioned in the report during the period preceding twelve months from the date of this report for services in respect of managing or co-managing public offerings, corporate finance, investment banking or merchant banking, brokerage services or other advisory service in a merger or specific transaction in the normal course of business.

HSL or its analysts did not receive any compensation or other benefits from the companies mentioned in the report or third party in connection with preparation of the research report. Accordingly, neither HSL nor Research Analysts have any material conflict of interest at the time of publication of this report. Compensation of our Research Analysts is not based on any specific merchant banking, investment banking or brokerage service transactions. HSL may have issued other reports that are inconsistent with and reach different conclusion from the information presented in this report.

Research entity has not been engaged in market making activity for the subject company. Research analyst has not served as an officer, director or employee of the subject company. We have not received any compensation/benefits from the subject company or third party in connection with the Research Report.

HDFC securities Limited, I Think Techno Campus, Building - B, "Alpha", Office Floor 8, Near Kanjurmarg Station, Opp. Crompton Greaves, Kanjurmarg (East), Mumbai 400 042 Phone: (022) 3075 3400 Fax: (022) 2496 5066

Compliance Officer: Murli V Karkera Email: [complianceofficer@hdfcsec.com](mailto:complianceofficer@hdfcsec.com) Phone: (022) 3045 3600

For grievance redressal contact Customer Care Team Email: [customercare@hdfcsec.com](mailto:customercare@hdfcsec.com) Phone: (022) 39019400

HDFC Securities Limited, SEBI Reg. No.: NSE, BSE, MSEI, MCX: INZ000186937; AMFI Reg. No. ARN: 13549; PFRDA Reg. No. POP: 11092018; IRDA Corporate Agent License No.: CA0062; SEBI Research Analyst Reg. No.: INH000002475; SEBI Investment Adviser Reg. No.: INA000011538; CIN - U67120MH2000PLC152193

Investment in securities market are subject to market risks. Read all the related documents carefully before investing.

Mutual Funds Investments are subject to market risk. Please read the offer and scheme related documents carefully before investing.

Registration granted by SEBI, membership of BASL (in case of IAs) and certification from NISM in no way guarantee performance of the intermediary or provide any assurance of returns to investors.